

Digital Catalyst Programme 2026

A Kalpavriksha Sustainable Development Society Initiative

120 Students

24 Teams

One Transformative Journey

- ★ *Leadership*
- ★ *Computational Thinking*
- ★ *AI Readiness*
- ★ *Community Innovation*

A flagship youth development initiative for high-potential Class 11 students from rural and remote Uttarakhand.

Hosted at a partner university campus in Uttarakhand.



The Big Idea

Talent is everywhere. Opportunity is not.



Across rural and remote Uttarakhand, many high-potential students have the intelligence, discipline, and local insight to lead. What they often lack is access to immersive learning, future-facing mentorship, and structured pathways that help them grow with confidence, capability, and purpose.

DCP 2026 is designed to change that.

It equips students with leadership, computational thinking, AI readiness, collaboration, and community-rooted problem-solving through one focused journey — from local observation to team-based action.



Built on the DCP 2025 pilot:

67

students completed

14

student-led innovation projects

4.78/5

overall satisfaction

10

students selected for fully sponsored **NEET/JEE** coaching

- ✓ 120 High-Potential Students
- ✓ 24 Teams Of 5
- ✓ 10-Day Residential Bootcamp
- ✓ 3-Phase Journey
- ✓ Class 11 Cohort
- ✓ 2026 Cycle

“More than a bootcamp. A pathway from observation to action.”

How The Journey Works

A three-phase model designed for depth, continuity, and real-world application

Phase-1



Phase- 2



Phase- 3



PREPARE

Students begin the journey through school-linked outreach, orientation, and early problem identification. They reflect on challenges in their communities and build the foundation for deeper learning.



IMMERSE

Students come together on a partner university campus for an immersive experience focused on leadership, teamwork, computational thinking, AI-enabled inquiry, and structured project development.



IMPLEMENT

Teams continue refining, testing, improving, and presenting their ideas with ongoing mentor and peer support after the residential phase.

Logistics

- 10 programme days + travel days
- 12-day / 11-night residential format
- 120 students + programme staff
- On-campus hostel-based experience
- Mentorship, faculty sessions, and final showcase
- Follow-on support after the bootcamp

What Makes DCP 2026 Different

Designed for the AI Era. Rooted in Uttarakhand.

DCP 2026 is built for a simple reality: underserved youth need more than technical exposure. They need the ability to think clearly, work with AI responsibly, collaborate in teams, and turn local challenges into meaningful action.



What makes the model distinctive

- ▶ **Focused by Design**
A sharper 2026 model with depth, not filler.
- ▶ **Community-First Learning**
Projects begin with real local challenges.
- ▶ **AI with Responsibility**
Practical, thoughtful, and ethical use of AI.
- ▶ **Team-Based Innovation**
Leadership and teamwork are built into the model.
- ▶ **Beyond the Bootcamp**
Mentorship and project development continue after campus.
- ▶ **Built for Rural Equity**
Prioritizes high-potential students from underserved geographies.

What will students experience inside DCP 2026

1 Positive Youth Development Agency, voice, contribution	2 Future of Work Skills Communication, collaboration, adaptability
3 Computational Thinking Logic, structure, reasoning	4 AI-Enabled Computational Methods Practical and responsible AI use
5 Psychological Capital Confidence, hope, resilience	6 Antifragility & Adaptive Leadership Growing stronger through challenge

“Not a narrow technical intervention. A comprehensive youth development platform for a changing world.”

What Students Build

Students Don't Just Attend. They Create.

Each team enters with a community-linked challenge and works toward a sharper problem statement, solution concept, prototype, or implementation model.



From Local Challenge to Team-Led Solution

Challenge themes

- | | |
|--|---|
|  Education |  Environment |
|  Health |  Livelihoods |
|  Digital Inclusion |  Sustainable Tourism |
|  Water & Waste Management |  Community Services |

What students strengthen

- ✓ Leadership confidence
- ✓ Problem-solving and systems thinking
- ✓ Teamwork and accountability
- ✓ Communication and presentation
- ✓ AI-enabled inquiry
- ✓ Resilience and adaptive learning

“DCP 2026 helps students move from observing problems to shaping solutions with others.”

What DCP 2025 Demonstrated

DCP 2025 provided practical evidence that a university-linked, equity-oriented residential model can work for high-potential students from underserved geographies in Uttarakhand.



Who Was Reached

- ▶ **154** applications received
- ▶ **55%** girls
- ▶ **100** students selected
- ▶ **10** districts represented
- ▶ **68** joined the bootcamp
- ▶ **21** administrative blocks covered
- ▶ **67** completed the programme

Equity Profile

- **83.6%** from families earning below ₹3 lakh annually
- **35.8%** first-generation digital learners
- **70%** had only smartphone access at home

Programme Outcomes

- **14** student-led innovation projects developed
- **4.78/5** overall satisfaction rating
- **10** students selected for fully sponsored NEET/JEE coaching
- **98.5%** completion rate

What the Evidence Showed

Programme evidence indicated meaningful gains in:

- > computational thinking
- > learning-related cognitive functions
- > growth-oriented responses to challenge
- > psychological readiness and confidence

Delivery Credibility

DCP 2025 was hosted at **Maya Devi University** and supported by a broader ecosystem of scholarship, mentorship, and knowledge partners.

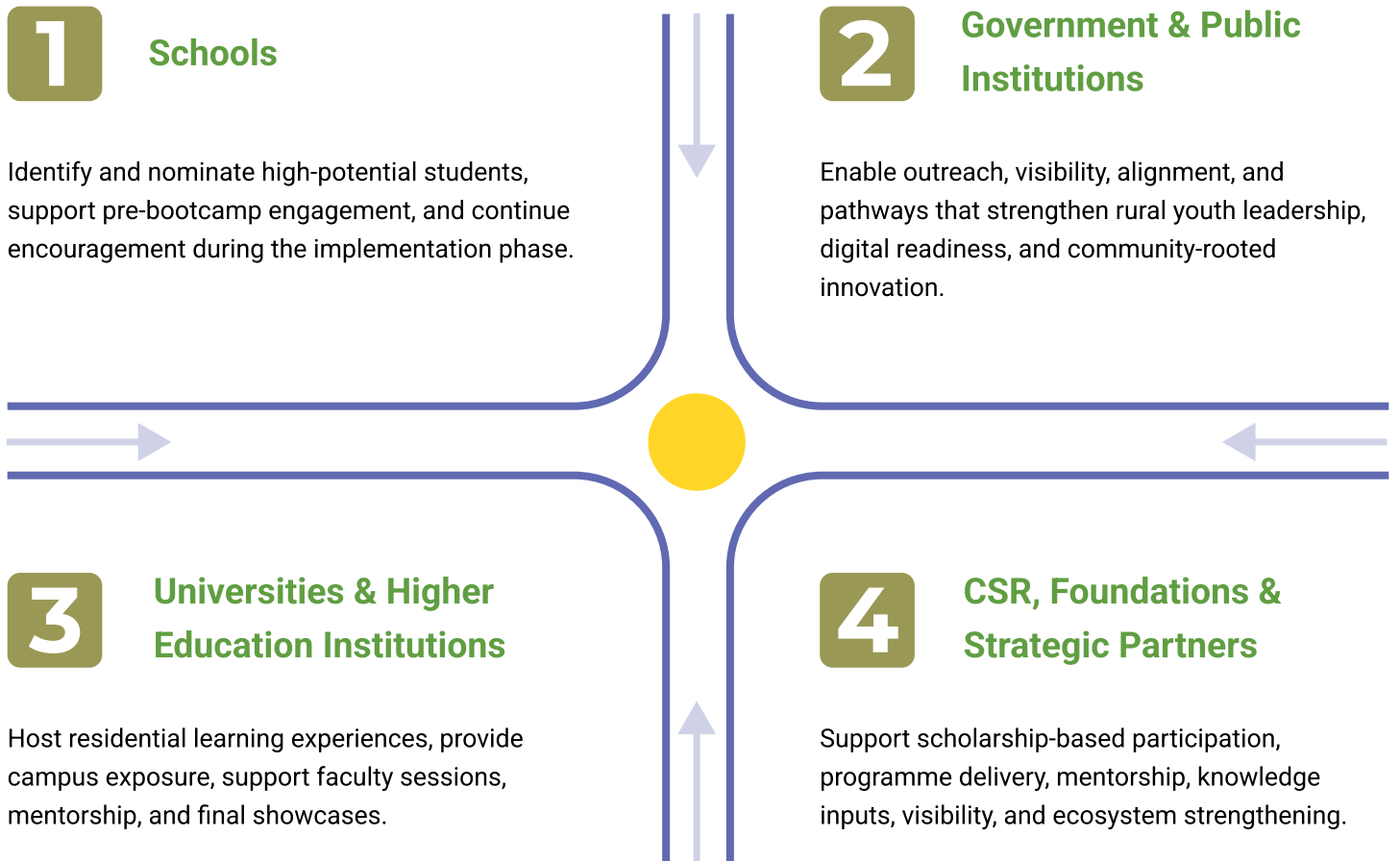
“The pilot demonstrated not only strong delivery, but also strong evidence of student growth, engagement, and opportunity creation.”

Partnership Opportunities

Building DCP 2026 Will Require a Strong Partnership Ecosystem

DCP 2026 is designed as a collaborative initiative. Different institutions can contribute in different ways to expand access, strengthen delivery, and build a stronger future-readiness pathway for talented students from rural and remote Uttarakhand.

How Different Partners Can Contribute:



Nominate • Host • Support • Mentor • Enable • Co-create

Let's Build The Next Generation Of Rural Youth Leaders In Uttarakhand

DCP 2026 invites schools, universities, public institutions, and strategic partners to help expand access to leadership, AI readiness, and community-rooted innovation for high-potential youth in Uttarakhand.

Partner with DCP 2026

Nominate • Host • Support • Mentor

 hello@kalpavriksha.org.in

 +91 7303 669 675

 kalpavriksha.org.in